

SAFETY SOLUTIONS



INTRODUCTION

Sensor Tech, A Vision World Engineering LLC Group of Company having core business in production of control valve, hydrants and accessories for the Water and Sewerage Treatment and Fire Protection Application.

Our group employed more than 1200 young and energetic Engineer's and Worker force, executing various project in Oil and Gas, Marine and MEP Sectors since 1995 onward.

Sensor Tech is totally committed to improving Quality, Health, Environmental Standards. We adopt stringent Quality measure to ensure the products are of high standards as per the recommendation of International Standards.

We provide complete support and solution including Design, Installation, Commissioning of various system and services which meets the highest possible standards with Local and International Code and Standards.

We have built up a strong brand name **FWIC Valves (UL and FM Listed)** supplying for Firefighting Industry, Oil and Gas, Water Works, Sewage and Marine Sectors in large quantity. FWIC Valves are manufactured according to international Standards and are sold worldwide with our Group Headquarters at Dubai.

As a part of our diversification and to support Safety Industry, we have tied up with an American Company for supply of various Safety and Security Products such as,

- 1) JUSTRITE SAFETY PRODUCTS
- 2) NOTRAX MATS FOR PROFESSIONAL USE
- 3) LINEBACKER CABLE MANAGEMENT
- 4) MONSTER MOTION SAFETY
- 5) TUFFTRAK GROUND PROTECTION SOLUTIONS

All our Safety Products are manufactured with 100% recycled materials to support Global Sustainability Policy. Recycling saves wastage, resources and energy; Hence, recycled products are Important to achieve sustainability. With the sustainability product, Sensor Tech delivers go green products and a carbon free environment.

We welcome feedback on any topic and if you any queries that are not answered on this website, simply email us.

CABLE PROTECTION

Checkers manufactures the most extensive line of high performance cable protection products in the world. These durable systems protect valuable electrical cables, cords and hose lines from damage while providing a method of safe passage for pedestrian traffic, vehicles and heavy duty equipment.

LINEBACKER SERIES

Model # CP5X125

- T-Connector
- Checkers' most robust cable protection option
- High load-bearing capacity
- Ideal for: Mining, Oil & Gas, Military, Industrial Applications



YELLOW JACKET SERIES

Model # YJ5-125

- Dog Bone Connector
- The "original" cable protector for over 30 years
- For heavy traffic areas
- Ideal for: Mining, Manufacturing, Material Handling, Construction



GUARD DOG SERIES

Model # GD5X125

- Dog Bone Connector
- Patented 5-bar tread surface
- Includes four through-holes for temporary mounting
- Ideal for: Entertainment, Sporting Events, and Public and Commercial Applications



FIREFLY SERIES

Model # FF5X25

- Dog Bone Connector
- High-visibility lid colors
- Battery-powered LED lights built in to side ramps
- Protects cables and hoses up to 1.325" outside dia.
- Ideal for: Entertainment



GRIP GUARD SERIES

Model # GG5X125

- Gripper Connector
- Lightweight construction - only weighs 12.75 lbs.
- Snap Fit™ hinged lid
- Ideal for: Public Entertainment Venues, and Light Commercial applications



FASTLANE SERIES

Model # FL1X1.5

- L-Connectors
- Easy drop over design
- Patented 5-bar tread surface for maximum traction
- Ideal for: Lightweight vehicles and Pedestrian Traffic



HOSE PROTECTION

Provide protection for valuable cable and hose lines while ensuring a safer method of passage for vehicles. High density, all-weather polyurethane construction protects lines up to 6.5 inches in diameter from damage by physical pressure and reduces cable and hose maintenance and replacement costs. The lightweight, modular design of interlocking 16 inch wide sections provides multi-length flexibility.



EXTREME CROSSOVER SYSTEM

Model # YJ2-400

- Protects cables & hoses
- Made from durable urethane that withstands over a million pounds gross vehicle weight
- Impact and abrasion resistant to trucks and falling rock
- Eliminates trenching cables



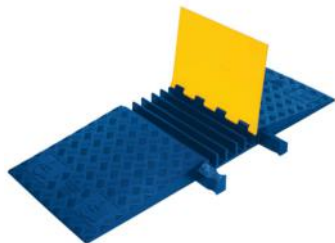
DIAMOND BACK HOSE BRIDGE SYSTEM

Model # UHB4045

- High density polyurethane construction
- Single or multiple tunnel systems available
- Multiple sizes for various hose & cable diameters
- Modular interlocking design

ADA/DDA ACCESSIBILITY RAMPS

Accessibility ramp system is manufactured to meet ADA and DDA compliant specifications and provides a safer crossing for vehicle and pedestrian traffic while protecting valuable electrical cables and hose lines. The gradual slope and slip-resistant surface ensure a safer crossing point for wheelchairs, carts, forklifts, vehicles with small wheels and heavy trucks.



YELLOW JACKET SERIES ADA/DDA

Model # YJ5-125-ADA

- Protects cables and hoses up to 1.325" outside dia.
- ADA/DDA accessibility ramps built in
- Connects directly to a Standard Ramp 5-Channel Yellow Jacket Cable Protector with Dog Bone Connector

ACCESSIBILITY RAMPS

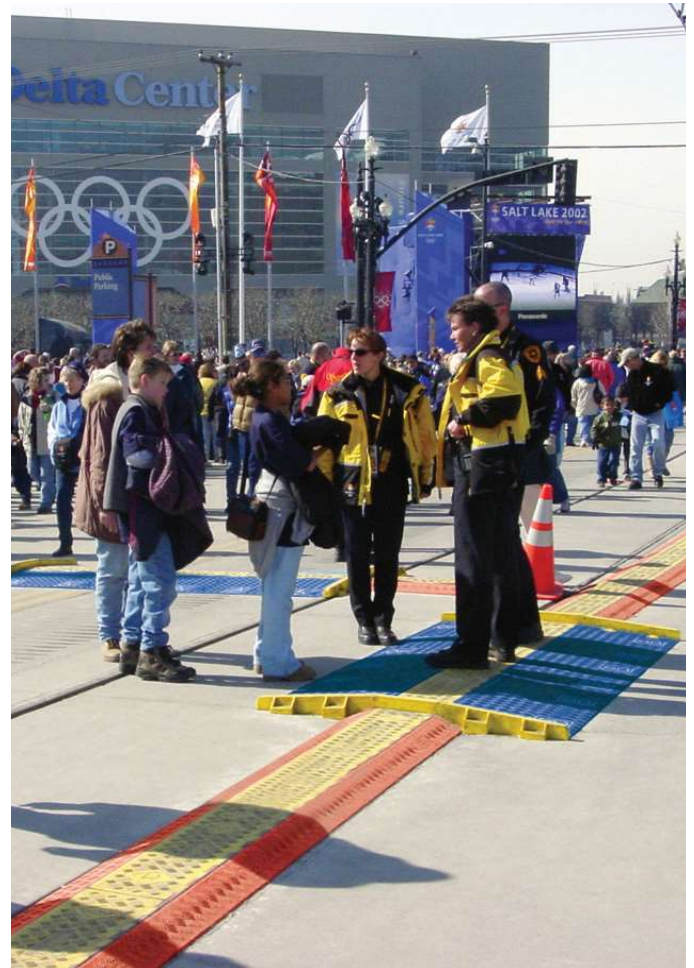
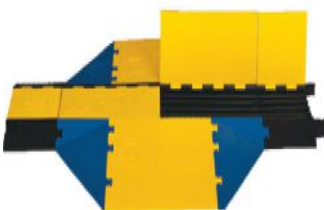
Model # CPRP-GD3

- Patented, modular ADA/DDA Compliant ramps
- Allows easy access to cables and cords
- Ramps can be added as needed
- One person installation - no tools required

AMS ACCESSIBILITY RAMPS

Model # AMS KIT 1

- Sectioned into pieces for easy setup and transport
- Features bright yellow ramps for easy visibility
- Includes blue ADA side ramps to eliminate ramp dropoff



WHEEL CHOCKS

Monster wheel chocks comply with the safety requirements of a variety of industries and ensure a safe working environment while vehicles are at rest. Offered in a variety of styles, Monster wheel chocks provide a safe chocking solution for any type of vehicle. Monster chocks were engineered in collaboration with safety experts to work with a wide range of ground equipment, commercial, and military vehicles.

MINING CHOCKS

Model # MC3000



- Light weight with tough urethane construction
- Optional studs available for snow and ice
- Chocking protocols imprinted on back of chock

HEAVY DUTY CHOCKS

Model # MC3011



- Tough urethane construction
- Mounting hole for ropes or chains
- Designed for haul trucks and heavy equipment
- Lightweight compared to steel and aluminum counterparts

ALL-TERRAIN CHOCKS

Model # AT3512



- Light weight with tough urethane construction
- Chocking protocols imprinted on back of chock
- Complies with SAE-J348, NFPA 1901, and NFPA 1906 Standards

GENERAL PURPOSE CHOCKS

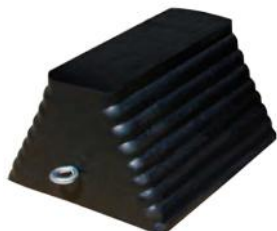
Model # UC1700



- Oil and chemical resistant
- Designed for utility vehicles
- Mounting hole for ropes, chains or brackets
- Mounting brackets available
- Recessed carrying handle

RUBBER CHOCKS

Model # RC915



- Either side can be positioned against tire
- Ideal for keeping truck trailers in place during loading or unloading
- Durable rubber construction

AVIATION CHOCKS

Model # AC4600



- For mid-size to large aircraft
- Impact-absorbing, lightweight urethane
- Weather and abrasion resistant
- Resistant to aircraft fuels, oils, and lubricants



AVIATION CHOCKS

Monster aviation chocks include the AC Series, made of highly durable, lightweight polyurethane. AC chocks last longer than wood chocks, never need painting and eliminate Foreign Object Damage threats for aircraft. The AC Series is ideal for private, commercial, cargo and military aircraft.

FOR LARGE AND OVERSIZED AIRCRAFT

Model # AC6856

- Will not rot, crack or splinter
- Features a rope-lock system
- Optional rope carrying handle for ease of use
- High load-bearing capacity



FOR MID-SIZED TO LARGE AIRCRAFT

Model # AC4614

- Reduces maintenance costs
- Durable and lightweight
- Won't splinter or crack, eliminating Foreign Object Damage



FOR SMALL TO MID-SIZED AIRCRAFT

Model # AC3512

- An updated version of the original wooden design
- Weather and abrasion resistant
- Optional anti-skid pads available for polished hanger floors



FOR SMALL AIRCRAFT

Model # AC201

- Fits the curvature of the tire to absorb wheel-squat
- Features molded-in soft base for increased traction
- Polyester rope lanyard connects chocks



INDUSTRIAL & TRAFFIC SIGNALS

Monster industrial signals include barricade lights, beacons, strobes, vehicle identification lights, high-intensity work lights, and magnetic flares. All of these products are designed with durability in mind and manufactured to withstand the harsh conditions encountered in the mining, oil & gas, construction, and traffic safety industries.



BARRICADE LIGHTS

Model # BR3.AC.D3.YA

- Light intensity is up to 8 effective candelas
- Only operates at night, and automatically turns off during day
- Extended battery life of up to 8 months in steady mode



INDUSTRIAL BEACONS

Model # SL.2250.LMA

- Integrated heat sink allows LEDs to be driven at higher intensities without sacrificing performance
- Can be used as a steady burn, non-flashing beacon
- 10 changeable flash patterns



LED STROBES

Model # SL.310.HS.A

- Four exclusive operating patterns
- Ultra high efficiency power supply produces more flashes while reducing power draw
- Available in heavy duty and micro styles



MAGNETIC LED FLARE

Model # BPRO-R

- Durable polycarbonate housing
- Reusable - replaces thousands of flares
- No perchlorate - won't contaminate ground water
- No toxic fumes released



LARGE ID SIGNS

Model # LUN48X36

- Solution for identifying vehicles
- Optimum visibility during the day or night even when not powered
- Withstands high pressure washing, impact, vibration, and big temperature shifts



SMALL ID SIGNS

Model # LUN-SV

- Perfect solution for identifying multiple vehicles
- Minimizes replacement and maintenance costs
- Numbering can be viewed when vehicle is not powered



TRAFFIC AND PARKING LOT SAFETY SOLUTIONS

Monster traffic safety products are efficient, high quality parking lot safety solutions. Designed for speed reduction, these solutions keep roads and parking lots safe for both motorists and pedestrians. Monster speed bumps, speed humps, and car stops are long lasting, easy to install, and environmentally friendly.



RUBBER SPEED HUMP

Model # 23500V

- Slows traffic to 10-15 mph
- Interlocking design expands to any road width
- Maintains continuous traffic flow
- Made from vulcanized rubber
- Anti-skid surface



RUBBER SPEED BUMP

Model # 26111

- Slows traffic to 2-5 mph
- Made from 100% recycled tires
- In-molded reflective tape and cat eye reflectors enhance visibility
- Can be installed for temporary or permanent use



PLASTIC SPEED BUMP

Model # SB45

- 100% recycled plastic
- Withstands abuse from gas, oil, salt, sunlight, and chemicals
- Highly visible & extremely durable
- Will not crack or chip



RUBBER WALL GUARD

Model # CG900

- High impact virgin rubber
- Long lasting and cost efficient
- Easily installed by 1 person
- Used for temporary or permanent installation
- High visibility



RUBBER PARKING STOP

Model # 16101Y

- Helps protect the front vehicles
- Prevents damage to structures
- Highly visible & extremely durable
- Ideal for indoor or outdoor residential parking



PLASTIC PARKING STOP

Model # CS45

- 100% recycled plastic
- Prevents damage to structures
- Highly visible & extremely durable
- Maintenance free
- Never requires painting



WARNING WHIPS

Monster warning whips are designed to increase the visibility of utility vehicles and small trucks on mine sites. Without a whip for extra visibility, haul truck operators can have difficulty seeing these smaller vehicles, potentially leading to accidents. Both lighted and non-lighted models are available, with many different mounting options.



LIGHTED WARNING WHIPS

Model # Various

- Extensive lighting options with a variety of flash pattern options
- Fiberglass resin designed to withstand harsh environments
- Waterproof LED housing to improve longevity



CYCLONE WHIP

Model # Various

- Features LED-wrapped whip covered with clear heat-shrink
- Rocket II Super Bright Waterproof LED Lights are up to 10 times brighter than competing brands
- 3, 5, 6, 8 or 10 foot lengths



NON-LIGHTED WARNING WHIPS

Model # Various

- Fiberglass resin construction designed to withstand harsh environments
- Most weather-resistant whip on the market



WING WHIP

Model # DELFS3OBWUNI

- Deters ground vehicles from entering problematic areas
- Avoids repairs to aircraft wings
- Maintains airline efficiency by keeping all scheduled aircraft operational and on-time



CRIBBING AND COMPOSITE LUMBER

Monster cribbing provides stability and solid contact. These products are manufactured from 100% recycled plastic which provides durability while being environmentally sound.



CRIBBING & WEDGES

Model # CH675C-24

- 100% recycled plastic construction
- Industrial grade
- Resistant to gas, oils, and chemicals
- Saves time and money



DURA CRIB® STEP CHOCKS

Model # CHSC-1

- Fastest way to stabilize
- Ensures stability
- Built-in hand hold
- Unmatched strength
- Durable against splitting, rot, fluid absorption, termites or mold



LIFT BAG PROTECTION PADS

Model # CHBP2424

- Protects expensive bags from hidden glass or sharp stones
- Helps protect from cuts and deflation
- Top pad flexes to conform to irregular surfaces



COMPOSITE LUMBER

Model # CHDS22/6

- Offers a stable, predictable and high load capacity
- Will not splinter and does not absorb most fluids
- Repeatable lab testing for tensile strength, PSI and other tests



INDUSTRIAL MATTING

Notrax® offers the perfect solution for a variety of workplace conditions and designs. From individual work stations, to large assembly lines and complex layouts we have products that fit your unique needs. Notrax® matting is designed to take the physical size and preferences of the worker into account, to provide the right balance between softness for comfort and hardness for stability.



DRY AREAS

Top Model #'s 419, 479, T17

- Different thicknesses and substrates allow for varying levels of ergonomic comfort
- Durable workstation mats for multi-shift operations
- Yellow borders and beveled edges available for added safety



WET AREAS

Top Model #'s 549, 550, 562

- Drainage systems keep moisture below worker surface
- Anti-slip top surfaces for traction
- Anti-fatigue properties for added comfort
- Varying levels of durability to meet your needs



GREASE/OIL AREAS

Top Model #'s 620, 650, 850

- Numerous compounds to meet the harshest applications
- Rugged anti-slip top surface
- Several products available with gritted top surface
- Withstands oils, greases, cutting fluids, chemicals and more



UNIQUE CONFIGURATIONS

Top Model #'s 460, 556, T17

- Dry or wet area products to meet your unique needs
- Easy to install onsite
- L shapes, semi-circles, full circles and other custom configurations are available



SPECIALTY AREAS

Top Model #'s 665, 826, 830

- High voltage switchboard mats available in commercial varieties and military grade
- ESD mats offered for conductive and dissipative solutions
- Mats for critical environments for contamination control



EXTENDED LENGTHS

Top Model #'s 479, 975, 979

- Long aisle solutions for dry industrial environments
- Continuous runs with no valleys for a seamless look
- Beveled or straight edges to meet your needs



ENTRANCE MATTING

Up to 80% of interior soil is brought into facilities from foot traffic, but with the utilization of entrance matting the majority of that dirt can be stopped at the door. Walk off matting can reduce floor maintenance costs and extends the life of the floor by absorbing much of the initial abuse. Notrax entrance mats also help reduce the risk of slips and falls due to wet and slippery floors.



INDOOR ENTRANCE

Top Model #'s 118, 130, 166

- Varying degrees of crush resistance and absorption for every entryway
- Professional, attractive patterns and colors
- Non-slip backing and textured top surfaces for added safety



OUTDOOR ENTRANCE

Top Model #'s 340, 345, 592

- Made from heavy-duty rubber to remain flexible while withstanding extreme cold
- Non-slip top surface for wet, slippery areas
- Non-slip rubber underside



RECESSED

Top Model #'s 370, 593, 323

- Rubber and carpet combine to make the ultimate entrance matting system
- Durable rubber holds up in harsh weather conditions
- Carpet scrapes shoes dry
- Drainage options available

CUSTOM LOGO MATTING

Logo mats serve as multi-functional entrance mats that stop dirt and debris while promoting your brand or message.



HEAVY TRAFFIC

Top Model #'s 373

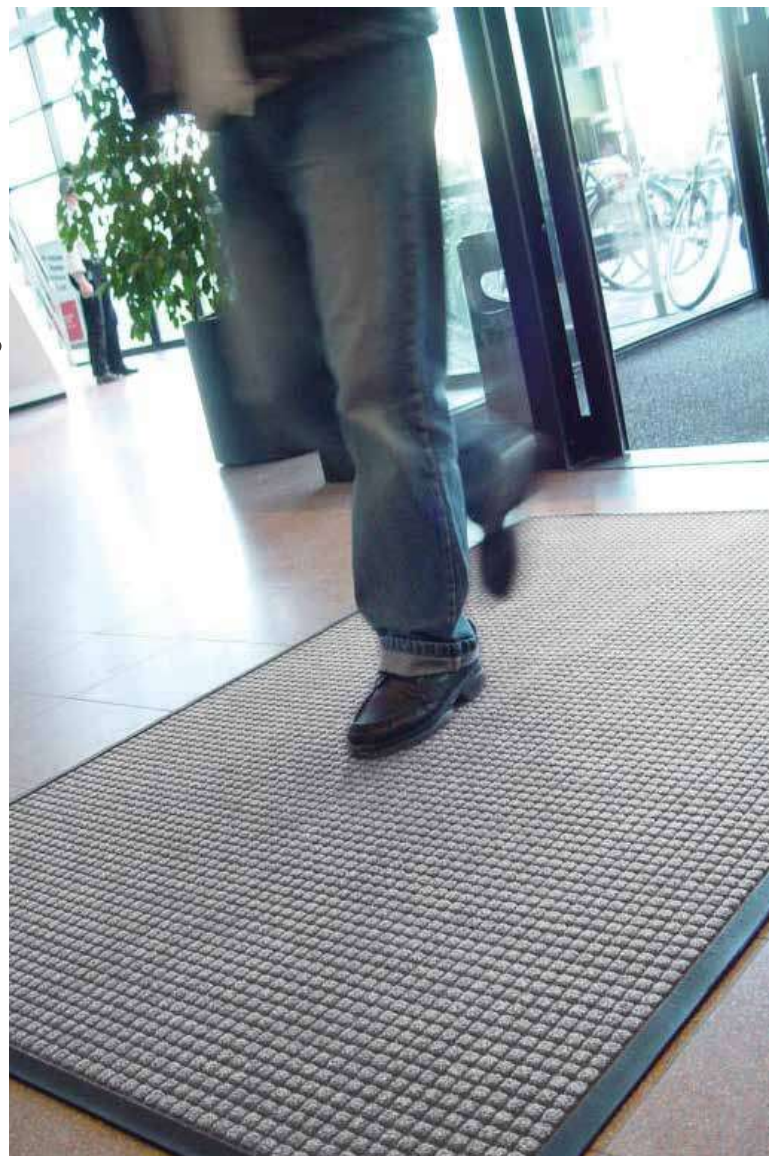
- Suitable for indoor and outdoor applications
- Up to 54 ounces of needle-punch yarn per square yard
- Stylish berber carpet surface in attractive colors



MEDIUM TRAFFIC

Top Model #'s 193

- Suitable for indoor use
- 24 ounces of cut-pile nylon yarn per square yard
- 22 base colors available



HEAVY DUTY TEMPORARY ACCESS MATTING

Manufactured from specially formulated blends of High Molecular or Ultra High Molecular Weight Polyethylene (HMWPE or UHMWPE), our heavy duty mats are tough and durable. The heavy duty range of connection systems includes seamless interlocking overlaps and Four3™ connectors, allows creation of a sturdy and secure working platform. TuffTrak® heavy duty matting features a rugged Chevron traction® surface providing superior grip, creating safe walkways, roadways and working platforms suitable for use in the most extreme conditions.



TUFFTRAK® XT

Model # TTXT

- 13'1" x 6'5" x 3.5"
- Weight 794 lbs
- Pure compressive load capacity 600 psi*
- 50 mats per truck
- Robust Four3™ connectors
- 8" overlap on all sides



TERRAROAD®

Model # TR1

- 10'1" x 7'4" x 3.25"
- Weight 453 lbs
- Pure compressive load capacity 600 psi*
- 85 mats per truck
- Conical underside with interlocking overlaps
- Built-in camlock connectors



TUFFTRAK® XL+

Model # TTXL+

- 13'4" x 6'6" x 1.8"
- Weight 794 lbs
- Pure compressive load capacity 150 tons*
- 60 mats per truck
- Four3™ stubby connectors
- 8" overlap on all sides



TUFFTRAK® XL

Model # TTXL

- 13'4" x 6'6" x 1.8"
- Weight 794 lbs
- Load bearing capacity 150 tons*
- 50 mats per truck
- Solid one piece construction



TUFFTRAK® ST

Model # TTST

- 9'8" x 8'2" x 1.5"
- Weight 650 lbs
- Load bearing capacity 150 tons*
- 80 mats per truck
- Low profile traction surface on reverse
- Various connector options

OUTRIGGER CRANE PADS

TuffTrak® heavy duty outrigger crane pads come in a wide range of standard sizes or can be custom designed, including bespoke colour and logo / company name engraving. Made from either High Density / Ultra High Molecular Weight Polyethylene or composite fiberglass for superior strength, TuffTrak® outrigger pads will not splinter or absorb water. They are strong and durable, chemical and oil resistant, and easy to clean.



OUTRIGGER PADS

Model # ZSP-OP60-6

- Square or round
- Convenient carry handles
- Rugged construction for a long service life
- Customizable colours and with your company branding and logo

MEDIUM DUTY TEMPORARY ACCESS MATTING

Manufactured from 100% recycled High Density Polyethylene, our medium duty matting solutions are ideal for traffic and pedestrian use within construction, transmission, events, landscaping, or for temporary access.

ALTURNAMAT[®]

Model # AM48

- Standard 96" x 48", 86 lbs
- Core thickness 0.5"
- Load bearing 120 tons*
- Range of sizes available
- Alturnatread[™] with low profile VersaTread[™] on the reverse
- Available in black, white or clear
- Optional hand holes



TRAKMAT[®]

Model # TM4496

- Standard Standard 96" x 22", 39 lbs
- Overall thickness 0.5"
- Load bearing 90* tons
- 3 sizes options
- Available in black and green



EUROMAT[®]

Model # EM

- 47" x 95", 77 lbs
- Core thickness 0.5"
- Load bearing 80 tons*
- Chevron traction[®] with Micro Traction[™]
- Sandblast finished recycled or virgin material
- Pedestrian surface available



LIBERTYMAT[™]

Model # LIB48

- 47" x 95", 77 lbs
- Core thickness 0.5"
- Load bearing 80 tons*
- Chevron traction[®]
- Textured finish



ECONOMATMB[™]

Model # EC

- 96" x 48", 70.5lbs
- Overall thickness 0.5
- Load bearing 15 tons*
- Embossed non-slip traction surface



CELLULAR PAVING SYSTEMS

GeoGrid is a ground reinforcement and stabilisation grid which is ideal for integration into a sustainable urban drainage system (SUDS). Manufactured from 100% recycled High Density Polyethylene, GeoGrid is fast and simple to install with interlocking connectors.

GEOGRID PAVING

Model # GEO

- Available in Standard or Premium depending on weight load requirements
- 19.5" x 19.5" x 1.6"
- Available with hi-vis demarcation blocks
- Pre-connected using 4 tiles in 1m² grids



* Load bearing capacity is dependent on ground conditions. Sizing is subject to a manufacturing variance of +/- 5%.

OUR PRODUCT RANGE



A PRODUCT OF: **CHECKERS**
SAFETY GROUP

CHECKERS' FAMILY OF BRANDS:

STRAX
MATS FOR PROFESSIONAL USE

MONSTER
MOTION SAFETY

LINEBACKER
CABLE MANAGEMENT

TuffTrak
Ground Protection Solutions



Member of Vision World Group
www.visionworlduae.com



SENSOR TECH FIRE FIGHTING AND SAFETY EQUIPMENT TRADING

P.O.Box : 231728, 506, Al saud Building, Al Qusais -4,
Dubai, UAE.

Tel : +9714-2232331 Fax : +9714-2232340

Email : info@sensortechuae.com

Website : www.sensortechuae.com